

San Bernardino International Airport Need for FAA integrated Radar Capability

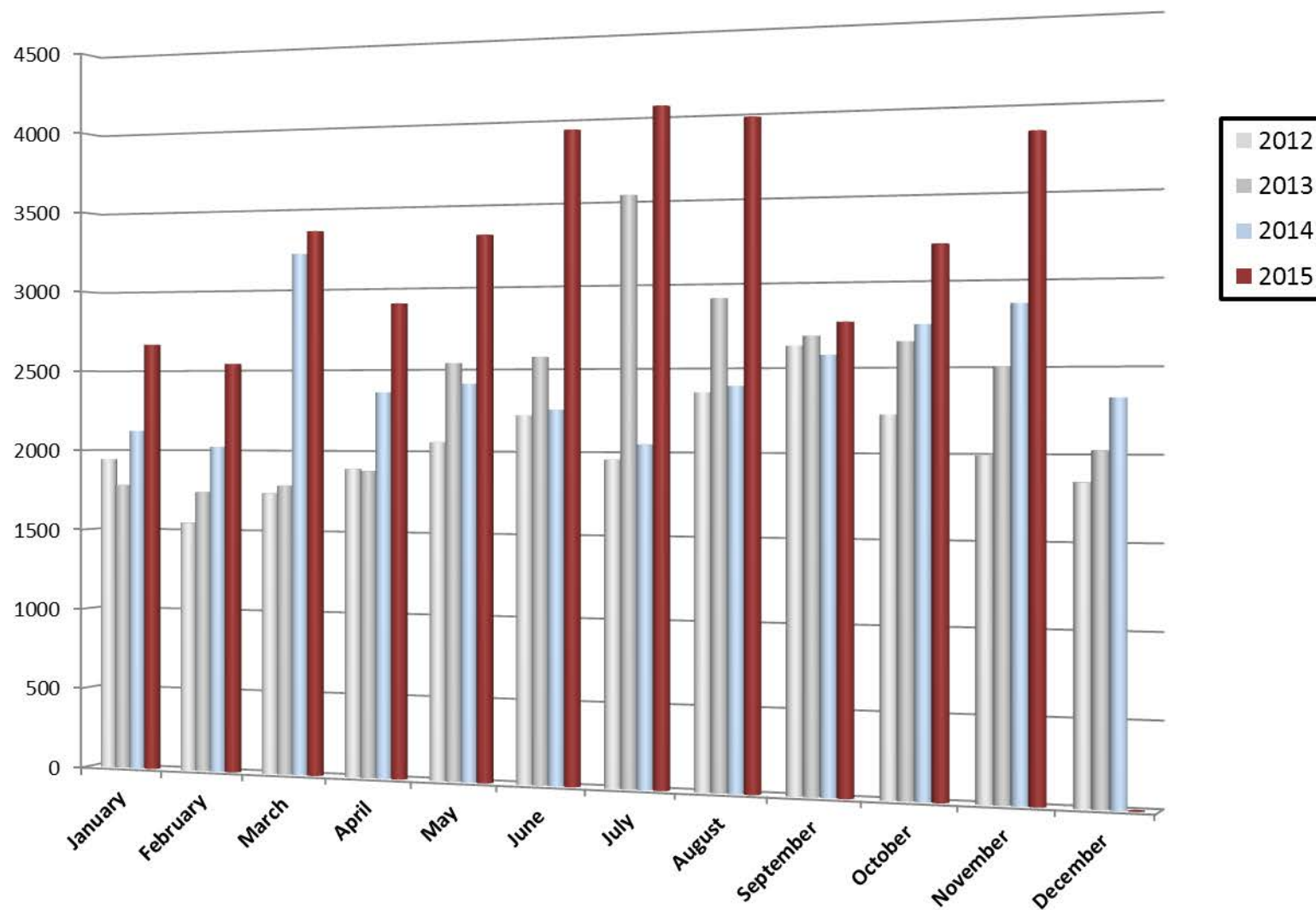




2015	Itinerate Ops										Local Ops			Total SBD Ops
	IFR					VFR								
Month	Air Carrier	Air Taxi	General Aviation	Military	Total IFR Ops	Air Carrier	Air Taxi	General Aviation	Military	Total VFR Ops	Civil	Military	Total Local Ops	
January	2	35	160	13	210		15	996	1	1012	1442		1442	2664
February	3	38	147	21	209		10	1234	11	1255	1052	24	1076	2540
March	2	32	189	16	239		19	1463	14	1496	1556	64	1620	3355
April	7	28	174	10	219		19	1352	4	1375	1310	0	1310	2904
May	2	38	219	20	279	2	41	1523	17	1583	1418	32	1450	3312
June	7	60	186	10	263	106	282	1846	8	2242	1400	24	1424	3929
July	6	72	177	14	269	39	132	1905	27	2103	1682		1682	4054
August	2	70	160	6	238	14	298	1945	12	2269	1464		1464	3971
September	44	84	147	21	296	2	124	1437	8	1571	880	18	898	2765
October	28	56	175	7	266	2	102	1626	4	1734	1204	4	1208	3208
November	33	44	175	5	257	1	162	1667	21	1851	1705	26	1731	3839
December					0					0			0	0
2015 Totals:	136	557	1909	143	2745	166	1204	16994	127	18491	15113	192	15305	36541



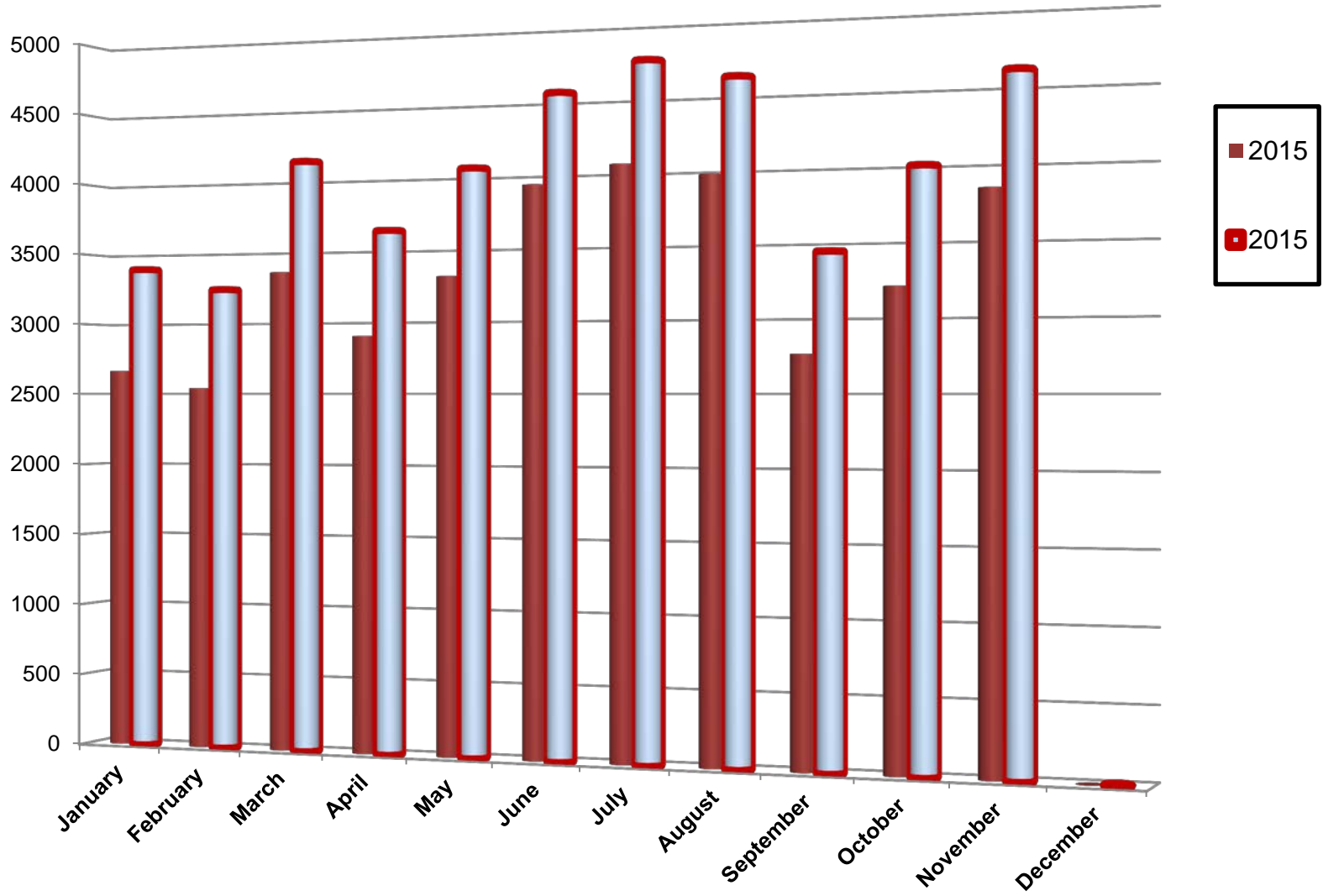
Monthly SBD Aircraft Activity



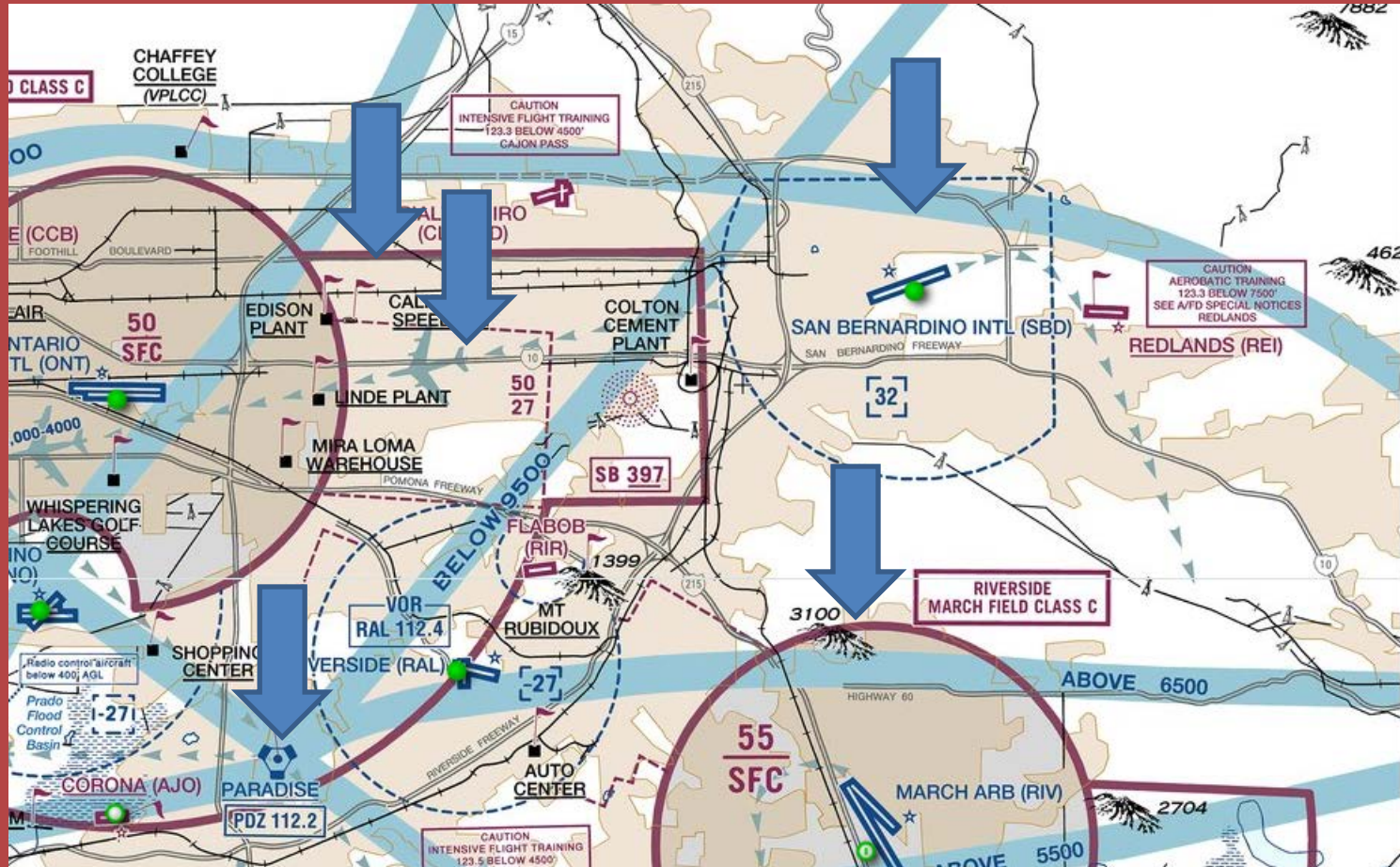
Over Flights		
Total OverFlights	Total SBD Tower	% OverFlights
722	3386	21%
696	3236	22%
772	4127	19%
728	3632	20%
737	4049	18%
618	4547	14%
692	4746	15%
644	4615	14%
675	3440	20%
783	3991	20%
758	4597	16%
0	0	0%
7825	44366	18%



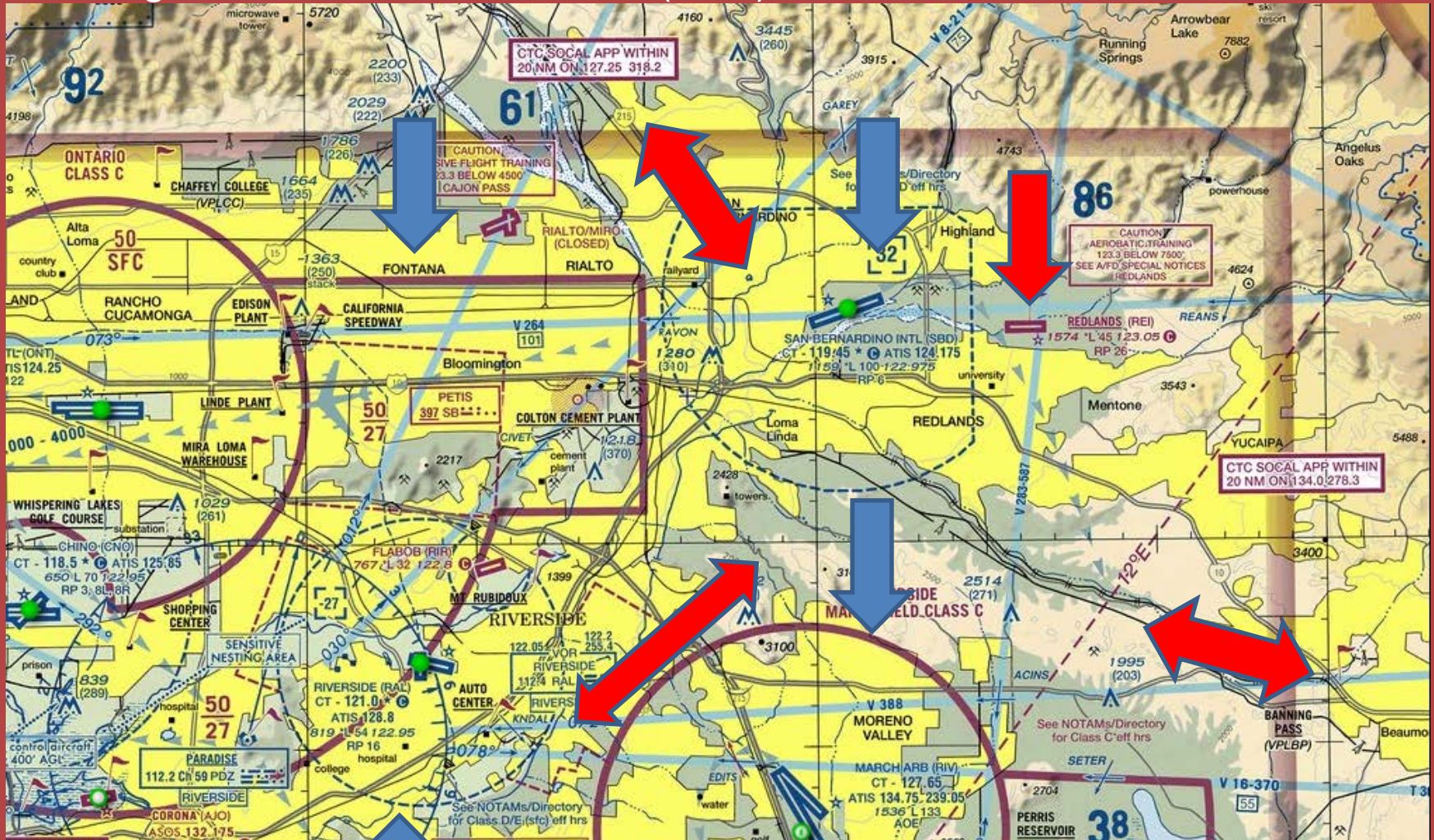
Monthly SBD Tower Activity



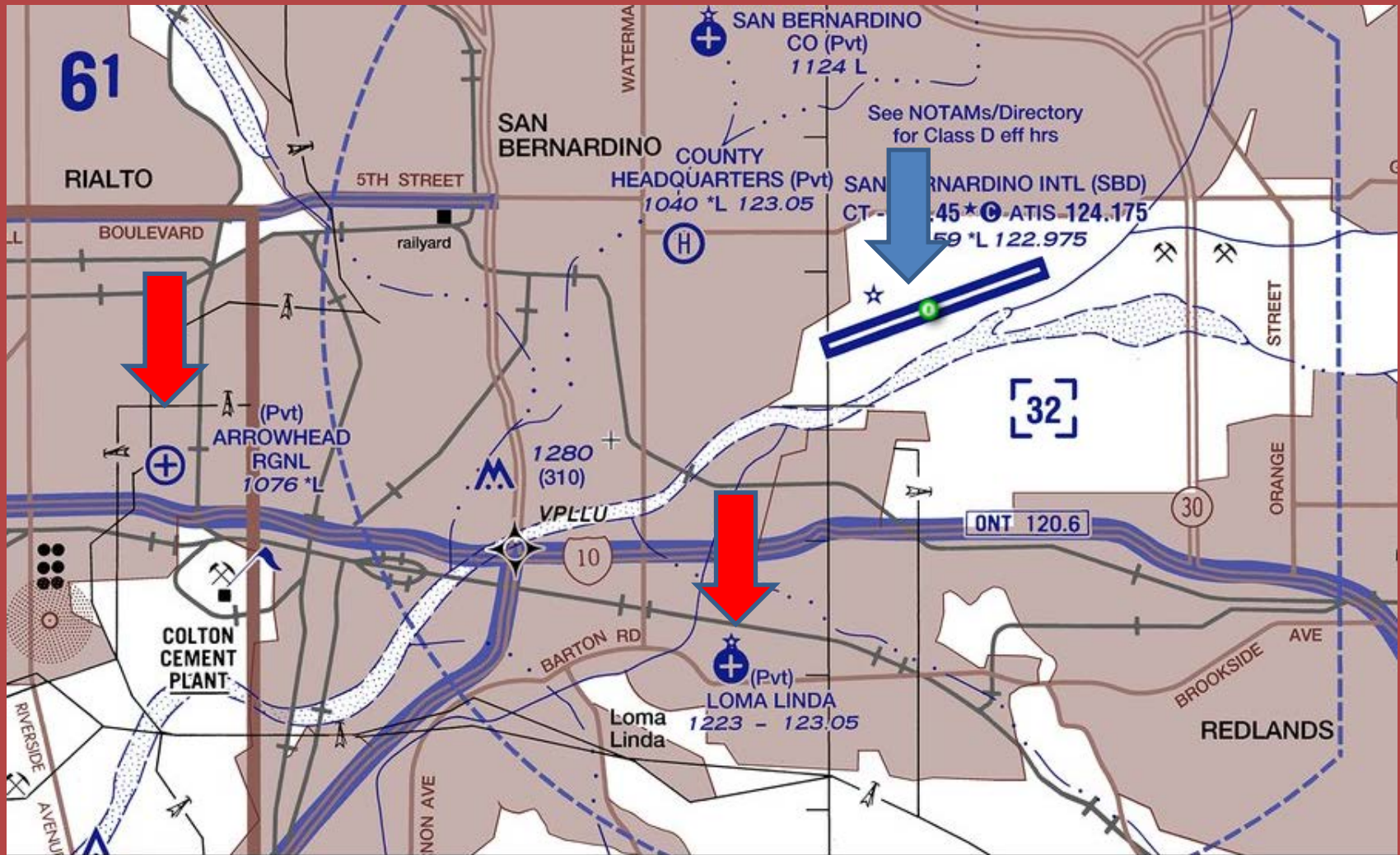
Los Angeles Flyway Chart



Los Angeles Terminal Area Chart (TAC)



Los Angeles Helicopter Chart (Old)





What's Changed since last visited (5 years ago)

1. Air traffic has increased over 50% since 2013
2. Increasing activity to continue ...
 - 30 new general aviation hangars on-line by the spring of 2016
 - FBO 2013 and Aggressive marketing program established in 2014
 - US Customs established over-flight exemption allowing international traffic to clear Customs at SBD rather than traditional border airports; international clearances have increased over 300% since 2013
3. Forest Service Operations Expanded
4. Sheriff's Department Relocated from Rialto to KSBD
5. Helicopter Training from Redlands has increased
6. Emergency Helicopter Activity has increased
 - Loma Linda Trauma Center
 - Arrowhead Regional Trauma Center
7. Redlands Airport activity has increased
8. Virtually unknown number of non-reported traffic passes through without calling KSBD
 - Redlands arrivals/departures
 - Cajon Pass – Banning Pass traffic



SBIAA Perspective

The radar equipment/feed would require SBIAA to fund the project through a reimbursable agreement with the FAA (whereby SBIAA would deposit funds for the equipment/feed upfront – typically 5 years) and the FAA would utilize the funds over the term of the agreement to maintain the equipment/feed through its proprietary network. The SBIAA board would make the final determination on the expenditure of funds, and would very likely recognize the benefits of a radar feed.

Mark Gibbs
Director of Aviation



SUMMARY

1. KSBD only towered airport in LA Basin without radar
2. KSBD traffic departs west and south directly into or under Class C Airspace (arrivals come from ...)
3. SBIAA appears willing to fund the solution
4. Safety for all will be greatly enhanced
 - Emergency traffic
 - Sheriff's traffic
 - Forest Service big tankers
 - Redlands arrival/departure
 - Expanding rapid growth at KSBD
5. It's clear that there is a need!

Thank You!

**Richard Eastman
CFIIMEI**

FAAST Representative

PO Box 1116 : Cedar Glen : CA 92321

+1 714 404 3325

reastman@eastmangroup.com